

## Neural correlates of binding features within- or cross-dimensions in visual conjunction search: An fMRI study

Ping Wei <sup>a,b</sup>, Hermann J. Müller <sup>c</sup>, Stefan Pollmann <sup>d</sup>, Xiaolin Zhou <sup>b,e,\*</sup>

<sup>a</sup> Beijing Key Laboratory of Learning and Cognition and Department of Psychology, Capital Normal University, Beijing 100048, China

<sup>b</sup> Center for Brain and Cognition Sciences and Department of Psychology, Peking University, Beijing 100871, China

<sup>c</sup> Department of Psychology, LMU München, D-80802 München, Germany

<sup>d</sup> Center for Behavioral Brain Sciences and Department of Experimental Psychology, Otto-von-Guericke-University Magdeburg, D-39016 Magdeburg, Germany

<sup>e</sup> Key Laboratory of Machine Perception (Ministry of Education), Peking University, Beijing 100871, China

### ARTICLE INFO

#### Article history:

Received 8 December 2010

Revised 8 April 2011

Accepted 12 April 2011

Available online 22 April 2011

#### Keywords:

Visual search

Feature search

Conjunction search

Within-dimension conjunction

Cross-dimension conjunction

fMRI

### ABSTRACT

The fMRI technique was used to investigate the functional neuroanatomy of binding features within- or cross-dimension during visual conjunction search. Participants were asked to perform feature search (FS; e.g., search for a vertical bar among tilted bars), within-dimension search (WS; e.g., search for an upright T among non-target oriented Ts and Ls), cross-dimension search (CS; e.g., search for an orange vertical bar among blue vertical bars and orange tilted bars), and complex search combining within- and cross-dimension features (WCS; e.g., search for an orange upright T among orange leftward Ts and blue Ls). Reaction times (RTs) taken to decide whether a target was present or absent were faster in the FS than in the WS, CS, and WCS conditions, but did not differ between the latter three conditions. Neuroimaging results revealed a set of fronto-parietal regions, including frontal eye field and intraparietal sulcus, to be consistently activated in conjunction search (WS, CS, and WCS) relative to feature search, suggesting that these regions play a more prominent role in matching visual input against the target template in conjunction search. Furthermore, left occipito-temporal cortex was more activated in within-dimension conjunction search, and bilateral intraparietal sulci were more activated in cross-dimension conjunction search. This suggests that features from the same dimension are 'bound' at a higher stage of the ventral pathway by conjoining the inputs from lower-level neurons, whereas neurons along the intraparietal sulcus appear to be necessary for discerning the presence of cross-dimensional conjunctions.

© 2011 Elsevier Inc. All rights reserved.

### Introduction

Visual search for feature conjunctions is typically much less efficient than search for simple features. In their classical Feature Integration Theory (FIT), Treisman and Gelade (1980) attempted to explain this by postulating a preattentive and an attentive processing stage. In the former, features are processed in parallel in feature maps, separately for stimulus dimensions such as color, orientation, curvature, etc. In the latter, conjunctions of features are analyzed by combining features from these separate feature maps — a process assumed to require attentional resources, thus leading to slow, inefficient search. While exceptions to this account have been described soon after its inception, the general notion of a parallel, preattentive feature analysis stage and a subsequent attentive analysis of feature conjunctions has prevailed in more recent models such as Guided Search (Cave and Wolfe, 1990; Wolfe, 1994).

Recent studies using functional magnetic resonance imaging (fMRI) have demonstrated that a large-scale brain network comprising the posterior parietal cortex (PPC), intraparietal sulcus (IPS), and frontal eye field (FEF) is involved in visual search (Arguin et al., 1993; Ashbridge et al., 1999; Corbetta et al., 1995; Coull et al., 2003; Donner et al., 2000, 2002, 2003; Gitelman et al., 2002; Leonards et al., 2000; Müller-Plath, 2008; Müller-Plath and Pollmann, 2003; Nobre et al., 2003; Rushworth et al., 2001; Sato et al., 2003; Wei et al., 2009; Wojciulik and Kanwisher, 1999; Wilkinson et al., 2002). A common question addressed in these studies is whether there are neural substrates specifically related to conjunction search, relative to feature search (Arguin et al., 1993; Corbetta et al., 1995; Coull et al., 2003; Friedman-Hill et al., 1995; Shafritz et al., 2002; Donner et al., 2000, 2002; Leonards et al., 2000; Nobre et al., 2003; Wojciulik and Kanwisher, 1999; Wilkinson et al., 2002). In almost all of these studies (with the exception of Wilkinson et al., 2002), the conjunction target was a combination of two features from two different dimensions; for example, the target was a red circle (containing dimensions of color and shape) presented among distractors of red squares and blue circles. However, there are also conjunction targets composed of two features from the same dimension (Duncan, 1987; Duncan and

\* Corresponding author at: Department of Psychology, Peking University, Beijing 100871, China. Fax: +86 10 6276 1081.

E-mail address: [xz104@pku.edu.cn](mailto:xz104@pku.edu.cn) (X. Zhou).

Humphreys, 1989); a well-known example is search for an upright T among differently oriented T's and L's (Duncan and Humphreys, 1989).

We reasoned that the neural substrates subserving search for cross-dimension conjunctions may be different from those for within-dimension conjunctions. Evidence in support of such a distinction comes from behavioral studies that demonstrated illusory conjunctions of color and form, but not of conjunctions within the form domain in normal observers (Cohen and Feintuch, 2002); intact binding of form features, but not color-form conjunctions in Balint's patients (Friedman-Hill et al., 1995; Humphreys, 2001; Humphreys et al., 2000); and a developmentally later onset of successful binding of color-form compared to within-form conjunctions in young children (Oakes et al., 2006). Importantly, patients with posterior parietal lesions showed deficits in conjoining color, size, and form features, but were unimpaired in search for form conjunctions in visual search (Humphreys et al., 2009).

While these data show a clear dissociation between within-dimension form conjunctions and cross-dimension conjunctions, the exact structure within parietal cortex supporting cross-domain binding remains unknown, due to lesion variability. Moreover, it remains unclear which neural structures support within-dimension binding in the form domain. Here, we used fMRI to directly investigate the differential neural substrates supporting cross-dimension (color-form) conjunctions and within-dimension (form) conjunctions.

We used four types of search tasks. The first one was simple feature search (FS): participants were asked to detect a vertically oriented bar among tilted distractor bars (Fig. 1). The second task was within-dimension search (WS); the target was an upright T among differently oriented T's and L's; that is, participants had to detect a specific conjunction of two features from the same dimension (i.e., a vertically and a horizontally oriented bar). The third task was cross-dimension search (CS): the target was, for example, an orange vertical bar presented among orange tilted bars and blue vertical bars; that is, participants had to find a specific conjunction of one feature from the color dimension and one feature from the orientation dimension. Finally, we created a fourth task that had not been investigated in previous behavioral or neuroimaging studies: a task requiring participants to search for a target which was a combination of within- and cross-dimension features (WCS), for example, an orange upright T among orange L's and blue T's; that is, participants had to find a specific conjunction of three features for the target, two from the orientation dimension and one from the color dimension.

Behaviorally, we hypothesized the search reaction times (RTs) to the target to be increasing as the target definition becomes more complex (involves more features): RTs would be the shortest in the FS condition and the longest in the WCS condition. At the neural level, we hypothesized that a set of fronto-parietal regions would be consistently activated in the CS, WS, and WCS conditions, relative to

the FS condition. This would indicate a general neural basis for conjunction search. Moreover, as compared to the FS and CS conditions, the WS and WCS conditions, which involved within-dimension conjunctions, may show a specific neural signature in higher-level areas in ventral-occipitotemporal cortex for binding features from the same dimension. Conversely, as compared to the FS and WS conditions, the CS and WCS conditions, which required search for cross-dimension conjunctions, may involve activation of the cortex along the IPS for functioning along the lines of a master map of locations, as originally proposed by Treisman and Gelade (1980).

## Method

### Participants

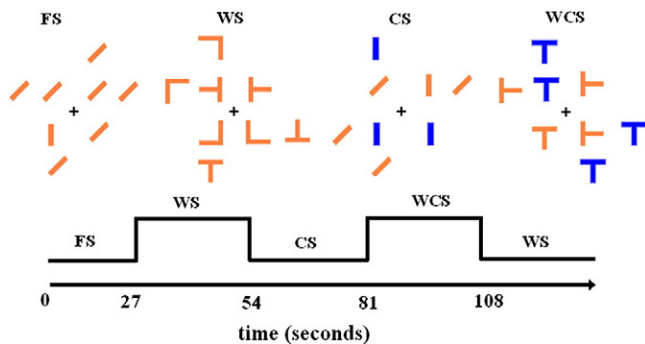
Fourteen undergraduate and graduate students (8 females, aged between 20 and 26 years) participated in the experiment. All of them were right-handed and had normal or corrected-to-normal vision, and none had a history of neurological or psychiatric disorders. All the participants gave written informed consent before the scanning. This study was approved by the Academic Committee of the Department of Psychology, Peking University.

### Design and stimuli

A block design was used for the current fMRI experiment, with a specific instruction before each block informing participants of the target they had to search for in the upcoming block. There were four types of blocks corresponding to the four search tasks (the upper part of Fig. 1): Feature Search (FS), in which participants were asked to search for a vertically oriented bar among tilted bars; Within-dimension conjunction Search (WS), in which they were asked to search for an upright T among non-target-oriented Ts and Ls; Cross-dimension conjunction Search (CS), in which they were asked to search for a colored vertical bar (an orange vertical bar among orange tilted bar and blue vertical bar; or a blue vertical bar among blue tilted bar and orange vertical bar); and Within- and Cross-dimension conjunction Search (WCS), in which they were asked to search for a colored upright T (an orange upright T among orange left-tilted T's and blue upright T's; or an orange upright T among orange right-tilted T's and blue upright T's; or a blue upright T among blue left-tilted T's and orange upright T's; or a blue upright T among blue right-tilted T's and orange upright T's). The target was variable across search blocks for the CS and WCS conditions.

Each search task consisted of 14 blocks. All the blocks were pseudo-randomized in one continuous scanning session of 25 min and 19.5 s, with the restriction that blocks of the same task were interleaved with blocks of other tasks (the lower part of Fig. 1). Each block consisted of 3 target-present trials and 3 target-absent trials. Half of the participants were instructed to respond by pressing a "target-present" button with their index finger and a "target-absent" button with their middle finger; for the other half, the mapping was reversed. Each block lasted for 24 s plus 3 s instruction prior to each block. Only the fixation sign was displayed during the first 7.5 s for participants to become accustomed to the scanning noise and for the MR signal to reach a steady state. All participants completed a training session of 10 min before the scanning.

Stimuli were presented through an LCD projector onto a rear projection screen located behind the participant's head. Participants viewed the screen through an angled mirror on the head-coil. Presentation of stimuli and recording of responses were controlled by Presentation software (<http://nbs.neuro-bs.com/>). Before the start of each block, the instruction was presented at the center of the screen for 3 s, to clarify to the participant the target in the following block (e.g., "please search for a vertical bar", or "please search for an orange upright T"). In the following search block, 6



**Fig. 1.** Example block sequence and example display for each search type. FS = Feature Search, WS = Within-dimension conjunction Search, CS = Cross-dimension conjunction Search, WCS = combination of Within- and Cross-dimension conjunction Search.

search trials with 2 null trials were intermixed. A search trial lasted 2500 ms. At the start of a search trial, a white fixation cross, subtending  $0.20^\circ$  in visual angle, appeared at the center of the black screen for 400 ms, followed by a black screen for 100 ms. Then the fixation sign was presented again for another 500 ms, making the cross appear to flash briefly. This was to warn participants about the upcoming search display, which was presented for 500 ms. The search display consisted of a central fixation marker surrounded by 8 bar stimuli (each measuring  $0.8^\circ \times 0.2^\circ$ ) or 8 T-shape stimuli (each subtending  $0.8^\circ \times 0.8^\circ$ ). The stimuli were placed at 8 (randomly selected) positions on a virtual, cross-shaped grid, with a maximum eccentricity of  $3^\circ$  of visual angle (see Fig. 1 for block sequence and sample display). At the end of this 1500 ms, the fixation cross was presented for 1000 ms. For null trials, only the fixation sign was presented throughout the trial for 2500 ms. The 6 search and 2 null trials in each block were randomly ordered. After each trial, an additional presentation of the fixation sign, with the duration of either 0 ms (for one trial), 250 ms (two trials), 500 ms (two trials), 750 ms (two trials), or 1000 ms (one trial), was added for jittering between trials. Effectively, participants saw 6 search trials in each block, with variable intervals between trials. Participants were asked to search for the target and respond as quickly and accurately as possible upon the presentation of the search display. They were instructed to maintain eye fixation on the fixation cross in the display center throughout the whole experiment (see also Nobre et al., 2003; Soto et al., 2007). Before scanning, the observers were familiarized with the task and performed several practice blocks in which they were explicitly told to maintain fixation during the task.

#### Data acquisition

A 3T Siemens Trio system with a standard head coil at the MRI Center for Brain Research in Beijing Normal University was used to obtain T2\*-weighted echo-planar images (EPI) with blood oxygenation level-dependent (BOLD) contrast (matrix size:  $64 \times 64$ , pixel size:  $3.4 \times 3.4$  mm). Twenty-four transversal slices of 4 mm thickness, oriented parallel to the anterior and posterior commissures, were acquired sequentially in ascending order with a 1 mm gap (TR = 1.5 s, TE = 30 ms, FOV = 220 mm, flip angle =  $90^\circ$ ). The slices enabled whole-brain coverage. High-resolution anatomic images were obtained using a standard 3D T1-weighted sequence with  $0.9 \times 0.9$  mm in plane resolution and 1.3 mm slice thickness ( $256 \times 256$  matrix). The first five volumes were discarded to allow for T1 equilibration effects. Images were spatially realigned to the sixth volume for head movement correction, coregistered with the anatomical 3D image. The functional images were then normalized, by applying the transforming matrix obtained through normalizing anatomical scans to a standard T1 template (Montreal Neurological Institute template provided by Statistical Parametric Mapping [SPM], see below) using the “unified-segmentation” function in SPM5 (see below) with resample of  $2 \times 2 \times 2$  mm<sup>3</sup> voxels. The data were then smoothed with a Gaussian kernel of 8 mm full-width half-maximum to accommodate inter-subject anatomical variability.

#### fMRI data analysis

Data were analyzed by using Statistical Parametric Mapping software SPM5, Wellcome Department of Imaging Neuroscience, London (Friston et al., 1995), employing a random-effects model. At the first level, four event types were defined, including: FS, WS, CS, and WCS. The event types were time-locked to the onset of blocks and were modeled by using a box-car function (convolved with the hemodynamic response function). Additionally, instructions were included as extra regressors of no interest. The obtained event type images of the first-level analysis were entered into a second level random-effects group analysis by using a flexible factorial design, in

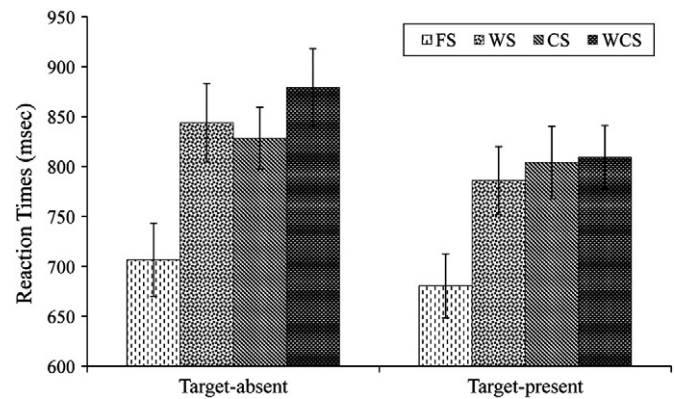


Fig. 2. Mean reaction times (ms) with standard errors in terms of the experimental conditions. See abbreviations in legend in Fig. 1.

which the main effects of conditions and subjects were calculated. Activations will be reported at a family-wise error (FWE) corrected threshold of  $p < 0.05$ .

## Results

### Behavior

Mean reaction times (RTs) and response error rates were calculated for each of the participants (see Table 1 and Fig. 2). Outlier RTs that were more than three standard deviations above or below the individual mean in each experimental condition were excluded from the data analysis (0.9% of the total data points).

A 4 (search type: FS, WS, CS, WCS)  $\times$  2 (target absent, present) analysis of variance (ANOVA) was conducted, which revealed a significant main effect of target presence,  $F(1, 13) = 8.83$ ,  $p < .05$ : RTs were longer in target-absent than in target-present trials (815 vs. 770 ms). Importantly, the main effect of search type was significant,  $F(3, 39) = 59.62$ ,  $p < .001$ . Planned pairwise comparisons showed that RTs were significantly faster in the FS condition (694 ms) compared to the WS (814 ms), CS (816 ms), and WCS (844 ms) conditions,  $p < .001$ ; the latter three did not differ from each other,  $p > .1$ . The interaction between search type and target presence reached significance,  $F(3, 39) = 3.02$ ,  $p < .05$ , mainly because the difference between target-absent and target-present trials was larger for WCS (70 ms) or WS (58 ms) than for CS (24 ms) and FS (26 ms).

An ANOVA of the error rates revealed only a main effect of search type,  $F(3, 39) = 6.10$ ,  $p < .005$ : participants made fewer errors in the FS condition (1.0%) compared to the WS (4.9%), CS (4.0%), and WCS conditions (4.8%),  $p < .05$ . No other effects reached significance.

### Imaging

The main purpose of this study was to examine differential neural activations between different types of visual search; hence, target-absent and target-present trials were collapsed in the blocked imaging data analysis. Condition-specific increases in brain activity

Table 1

Mean reaction times (ms), standard errors (SE), and error percentages (%) as a function of search types and target presence.

	FS		WS		CS		WCS	
	RT(SE)	Err	RT(SE)	Err	RT(SE)	Err	RT(SE)	Err
Target-absent	707 (39)	1.2	844 (42)	4.6	828 (33)	1.5	879 (42)	3.4
Target-present	681 (33)	0.7	786 (35)	5.3	804 (38)	6.5	809 (33)	6.3



**Table 2**  
Brain areas activated in the contrasts of CS, WS, and WCS conditions relative to FS condition. The activations were reported with FWE correction of  $p < .05$ . Coordinates (x, y, z) correspond to the MNI (Montreal Neurological Institute) space. FEF = frontal eye field, IPS = intraparietal sulcus, IPTO = junction of intraparietal and transverse occipital sulcus, SEF = supplementary eye field.

Anatomical regions	L/R	WS vs. FS			CS vs. FS			WCS vs. FS					
		No. of voxels	Z score	Cluster peak (X, Y, Z)	No. of voxels	Z score	Cluster peak (X, Y, Z)	No. of voxels	Z score	Cluster peak (X, Y, Z)			
FEF (Inferior FEF)	L	52	5.48	-28 -2 44	36	5.05	-20 -6 48	133	5.67	-26 -4 50			
	L	34	5.06	-46 2 34							98	5.48	-46 2 36
	R	636	6.35	30 6 42							349	5.85	30 2 38
IPS	L	1136	6.08	-34 -38 34	58	5.53	-28 -40 38	2286	6.7	-20 -64 42			
	R	2236	6.45	30 -62 36							1476	6.38	26 -68 34
IPTO	L				29	5.13	36 -82 12	195	5.49	-28 26 0			
	R										244	5.85	-30 -86 16
Anterior insula	L	242	5.65	-30 22 -12									
	R	543	5.95	34 26 -4									
Pre-SEF	/	43	5.12	6 30 38									
Fusiform gyrus	L	317	5.53	-48 -56 -16				905	6.25	-40 -60 -12			
	R										106	5.44	46 -68 -14
Inferior frontal sulcus	R	68	5.2	50 10 32									
Cerebellum	/	111	5.86	-8 -76 -32				103	5.73	-6 -78 -30			

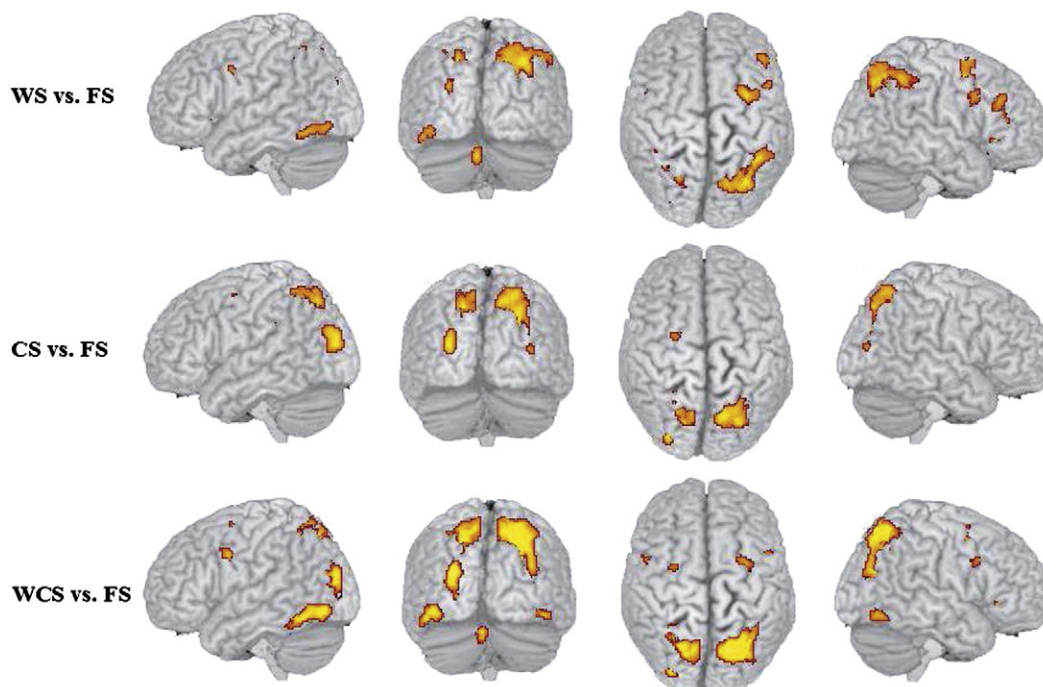
are shown in Table 2 and Fig. 3. As compared to the FS condition, the WS, CS, and WCS conditions activated similar brain areas in frontal and parietal lobes.

In order to determine the neural substrates of binding features from the same dimension, we performed a conjunction analysis (Friston et al., 2005; Price and Friston, 1997) between contrasts of WCS vs. CS and WS vs. FS. If this within-dimension search requires specific neural substrates for accomplishing the task, it should be consistently activated whenever there is a need to bind two features from the same dimension, that is, the horizontally and the vertically oriented bar. Based on a conservative conjunction null hypothesis (Friston et al., 2005; Nichols et al., 2005) implemented in SPM 5, we set the threshold of  $p < 0.001$ , uncorrected, in combination with an extent threshold of 20 voxels (see also, for example, Kim et al., 2011; Weissman et al., 2002). Results revealed activations in the left fusiform gyrus (see Table 3 and Fig. 4).

The same logic was applied to the conjunction analysis of WCS vs. WS and CS vs. FS, which revealed the neural substrates involved in binding features from different dimensions, that is, color with orientation in the CS condition or color with T-shape in the WCS condition. This contrast revealed activations in bilateral superior parietal cortex and bilateral IPTO (junction of intraparietal and transverse occipital sulcus; uncorrected  $p < .001$  in combination with an extent threshold of 20 voxels; see also Table 3 and Fig. 4).

## Discussion

By asking participants to perform four types of visual search, we found that RTs for discerning target presence were faster in the FS condition (feature search) than in the WS (within-dimension conjunction search), CS (cross-dimension conjunction search), and WCS (combination of within- and cross-dimension conjunction



**Fig. 3.** Regions showing significant activation in contrast of WS vs. FS, CS vs. FS, and WCS vs. FS. See abbreviations in the legend of Fig. 1. The activations were reported with FWE correction of  $p < .05$ .

**Table 3**  
Results of conjunction analysis.

Anatomical regions	L/R	No. of voxels	Z score	Cluster peak (X, Y, Z)
(WCS vs. CS) & (WS vs. FS) Fusiform	L	32	5.00	−50 −58 −16
(WCS vs. WS) & (CS vs. FS) IPS (anterior)	L	40	3.45	−8 −62 64
	R	21	3.39	18 −58 60
IPTO	L	36	3.80	−28 −82 18
	R	104	4.44	34 −70 18

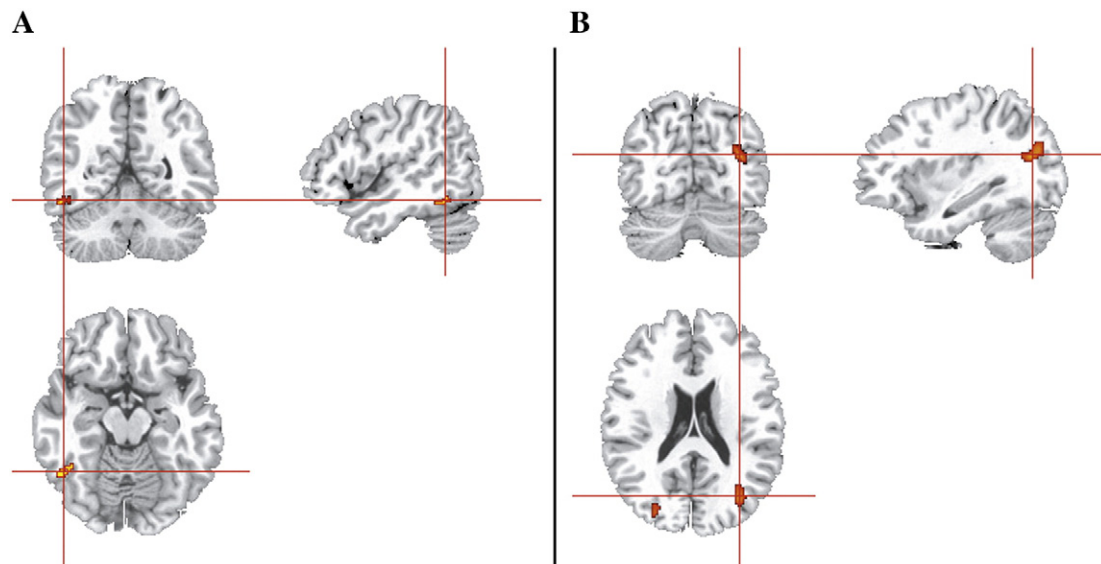
search) conditions, while RTs in the latter three conditions did not differ statistically from each other. Neuroimaging results found a set of fronto-parietal regions, including frontal eye fields and intraparietal sulci, were consistently activated in conjunction search (WS, CS, and WCS) relative to feature search, suggesting that these areas play a more prominent role in matching visual input against the target template represented in these areas in conjunction search than in feature search. Moreover, left fusiform were more activated in within-dimension conjunction search, whereas bilateral intraparietal sulci and IPTO were more activated in cross-dimension conjunction search, suggesting that differential neural correlates are involved in binding features from the same and, respectively, different dimensions.

The general activation of frontal eye field and intraparietal sulcus across different types of conjunction searches suggests that these areas are responsible for representing the target against distractors and for target template matching. Previous studies have found overlap of activation in these areas for conjunction search and difficult feature search (Donner et al., 2002, 2003; Leonards et al., 2000; Wei et al., 2009), indicating a common target representation or selection mechanism engaged in different types of visual search. For example, Donner et al. (2003) reported that the anterior IPS and IPTO were activated in conjunction search, relative to feature search, in the absence of distractors (i.e., with only the target being presented), demonstrating that target template matching or target selection is more demanding in conjunction search than in feature search. In both within- and cross-dimension search, the more features by which the target is (potentially) defined, the greater the likelihood that the target shares features with the distractors. This suggests that distractors having more features in common with the target would be more likely to falsely activate the target template. This would lead

to false alarms and a need for rechecking (e.g., Humphreys and Müller, 1993), the latter resulting in heavier demands on target selection and thus the involvement of FEF and IPS (see also Wei et al., 2009).

Moreover, the present data, along with behavioral (Cohen and Feintuch, 2002) and neuropsychological evidence (Humphreys, 2001; Humphreys et al., 2009), indicate that fundamentally different mechanisms may underlie the binding of features of the same visual dimension compared with feature binding across different dimensions. From V1 via V4 to IT, the complexity of stimuli optimally activating the respective neurons increases (Tanaka, 1996). Thus, neurons at a higher processing stage appear to process the combined input of neurons with simpler response characteristics at lower stages. While this has been well investigated for single dimensions (e.g., form), there is, to our knowledge, less evidence for such computations across dimensions (such as color and orientation). It may thus be that nearby features from the same dimension (such as the bars forming a T) can be bound together without recourse to parietal cortex, just by combining the inputs of lower-level neurons at a higher stage of the ventral pathway.

However, the same may not be possible for features of different dimensions, even though they share the same location in the visual field (e.g., a vertical bar in orange color). One possibility for the involvement of posterior parietal regions in cross-conjunctions is that these areas play a role in integrating visual features from different dimensions for visual search. As pointed out by Nobre et al. (2003), posterior parietal areas are situated at the end of the dorsal visual processing stream, in which perception is coordinated for action (Goodale and Milner, 1992; Snyder et al., 2000) along multiple spatial frameworks (Andersen, 1997; Colby and Duhamel, 1996; Snyder et al., 1998). They receive input from many specialized areas that analyze features in visual as well as in other modalities (Gottlieb, 2007). The posterior parietal cortex is thus in a position to bridge, coordinate, or bias activity across different specialized visual areas involved in selective perception during visual search. Another possible reason for the IPS involvement in cross-dimension search is that this involvement reflects the general attentional selection mechanism that transmits top-down attentional bias signals to (feature detectors coding) items sharing the (color) feature with the target. Previous behavioral studies suggest that, in cross-dimension conjunction search, increasing the number of distractors sharing the color (e.g., red) with the target (e.g., red circle) prolongs the search RTs, whereas



**Fig. 4.** Results of conjunction analysis. (A) Left fusiform activation in the contrast WCS vs. CS and WS vs. FS. (B) Right IPTO activation in the contrast WCS vs. WS and CS vs. FS ( $p < 0.001$ , cluster-level corrected  $p < .05$ ).

increasing the number of distractors having another color (e.g., blue) does not (Kaptein et al., 1994; Braithwaite et al., 2005; Geyer et al., 2010). This indicates that in finding a conjunction of two features from two different dimensions, participants may group the distractors by one target feature (e.g., red) to constrain their search process and to search for the target among this group (effectively reducing a conjunction search to a feature search). However, this strategy cannot be applied to within-dimension conjunction search as it is impossible to separate the display by any specific feature. Thus, the more pronounced activations along the IPS may suggest that these areas are important in sending top-down attentional bias signals to items sharing the (color) feature with the target.

One may question the reliability of the finding that specific neural substrates are subserving different types of conjunction search, as feature and conjunction searches involve different levels of task difficulty (as evidenced by RT differences in the present study). Previous studies have attempted to match task difficulty between feature and conjunction search (e.g., Donner et al., 2002; Nobre et al., 2003) for the purpose of revealing specific neural substrates of conjunction search. For example, Donner et al. (2002) used fMRI to measure common and, respectively, specific brain activity for color-form conjunction search and for an equally difficult feature search, relative to an easy feature-search baseline. Although several areas were found to be activated in both the conjunction and the hard feature search tasks (e.g., in posterior regions of the intraparietal sulcus), other areas showed greater activity in one task than in the other, suggesting the recruitment of distinct processes for the two tasks. However, making the feature search harder can introduce other confounding factors, such as participants using serial scanning of the display for hard feature search (see Humphreys et al., 2009, for discussion), thus leading to parietal activation. This activation would be indistinguishable from the activation for binding process in conjunction search. In the current experiment, although the task difficulty was not matched for feature and conjunction search, it was probably matched for different types of conjunction search, as demonstrated by the comparable search RTs. Although the activation differences for the CS, WS, and WCS conditions, relative to the FS condition, might involve not only the binding processes but also general cognitive processes related to the task difficulty (e.g., attentional devotion), activation differences between the three conjunction search tasks should not be contaminated by task difficulty. With the factorial manipulation of cross-dimension and within-dimension binding and using the conjunction analysis method (Price and Friston, 1997), we can generally rule out explanations relying on task difficulty. For example, for the conjunction analysis between contrasts of WCS vs. WS and CS vs. FS, the resulting brain activation in bilateral IPS and IPTO cannot be simply attributed to the differential difficulty between the CS and FS conditions, but rather to cognitive processes underlying cross-dimension binding that were consistently involved in both the contrast WCS vs. WS and the contrast CS vs. FS.

Finally, Feature Integration Theory (Treisman, 1998; Treisman and Gelade, 1980) proposed that feature binding is mediated by spatial attention, through which the various features belonging to one object at the focally attended location are linked together. This is characterized as assuming a single binding process, irrespective of the nature of features. However, the present results, together with neuropsychological evidence (Humphreys, 2001; Humphreys et al., 2000, 2009), suggest that binding of form elements operates within the ventral pathway, while binding of form with surface properties such as color is modulated by the parietal cortex. Such differentiations should be integrated into future theories of visual search.

## Conclusion

By asking participants to perform four types of visual search, feature search (FS), within-dimension conjunction search (WS), cross-

dimension conjunction search (CS), and a combination of within- and cross-dimension conjunction search (WCS), we showed that a set of fronto-parietal regions, including frontal eye fields and intraparietal sulcus, was consistently activated in conjunction search (WS, CS, and WCS) relative to feature search, suggesting that these areas may play a more prominent role in representing the target against distractors in conjunction search than in feature search. Moreover, there might be a neural 'master map' in posterior parietal cortex that subserves the binding of individual features coded in distinct feature maps by common location. However, it appears to be needed only for cross-dimension conjunctions, such as of color and form, whereas within-dimension conjunctions, of form, can be processed within the ventral occipito-temporal object processing stream.

## Acknowledgments

This study, based on part of the Ph.D thesis submitted by the first author to Peking University in April, 2009, was supported by the Natural Science Foundation of China (30770712, 31000502, 90920012), the National Basic Research Program of China (973 Program: 2010CB833904), and the Fundamental Research Funds for the Central Universities. Hermann Müller was supported by the German Research Foundation (DFG; Research Group FOR480 and Excellence Cluster 142) and Stefan Pollmann by the German Research Foundation (DFG, PO 548/6-1). Electronic mail concerning this study should be addressed to Dr. Xiaolin Zhou, xz104@pku.edu.cn or Dr. Ping Wei, aweiping@gmail.com.

## References

- Andersen, R.A., 1997. Multimodal integration for the representation of space in the posterior parietal cortex. *Philos. Trans. R. Soc. Lond. B Biol. Sci.* 352, 1421–1428.
- Arguin, M., Joannette, Y., Cavanagh, P., 1993. Visual search for feature and conjunction targets with an attention deficit. *J. Cogn. Neurosci.* 5, 5436–5452.
- Ashbridge, E., Cowey, A., Wade, D., 1999. Does parietal cortex contribute to feature binding? *Neuropsychologia* 37, 999–1004.
- Braithwaite, J.J., Humphreys, G.W., Hulleman, J., 2005. Color-based grouping and inhibition in visual search: evidence from a probe detection analysis of preview search. *Percept. Psychophys.* 67, 81–101.
- Cave, K.R., Wolfe, J.M., 1990. Modeling the role of parallel processing in visual search. *Cogn. Psychol.* 22, 225–271.
- Cohen, A., Feintuch, U., 2002. The dimensional-action system: a distinct visual system. In: Prinz, W., Hommel, B. (Eds.), *Common Mechanisms in Perception and Action: Attention and Performance XIX*. Oxford University Press, Oxford, pp. 587–608.
- Colby, C.L., Duhamel, J.R., 1996. Spatial representations for action in parietal cortex. *Cogn. Brain Res.* 5, 105–115.
- Corbetta, M., Shulman, G.L., Miezin, F.M., Petersen, S.E., 1995. Superior parietal cortex activation during spatial attention shifts and visual feature conjunction. *Science* 270, 802–805.
- Coull, J.T., Walsh, V., Frith, C.D., Nobre, A.C., 2003. Distinct neural substrates for visual search amongst spatial versus temporal distractors. *Cogn. Brain Res.* 17, 368–379.
- Donner, T., Kettermann, A., Diesch, E., Ostendorf, F., Villringer, A., Brandt, S.A., 2000. Involvement of the human frontal eye field and multiple parietal areas in covert visual selection during conjunction search. *Eur. J. Neurosci.* 12, 3407–3414.
- Donner, T.H., Kettermann, A., Diesch, E., Ostendorf, F., Villringer, A., Brandt, S.A., 2002. Visual feature and conjunction searches of equal difficulty engage only partially overlapping frontoparietal networks. *Neuroimage* 15, 16–25.
- Donner, T.H., Kettermann, A., Diesch, E., Villringer, A., Brandt, S.A., 2003. Parietal activation during visual search in the absence of multiple distractors. *Neuroreport* 14, 2257–2261.
- Duncan, J., 1987. Attention and reading: wholes and parts in shape recognition. A tutorial review. In: Coltheart, M. (Ed.), *Attention and Performance XII: The Psychology of Reading*. Lawrence Erlbaum Associates, London, pp. 39–61.
- Duncan, J., Humphreys, G.W., 1989. Visual-search and stimulus similarity. *Psychol. Rev.* 96, 433–458.
- Friedman-Hill, S.R., Robertson, L.C., Treisman, A., 1995. Parietal contributions to visual feature binding: evidence from a patient with bilateral lesions. *Science* 69, 853–855.
- Friston, K.J., Holmes, A.P., Poline, J.B., Grasby, P.J., Williams, S.C., Frackowiak, R.S., Turner, R., 1995. Analysis of fMRI time series revisited. *Neuroimage* 2, 45–53.
- Friston, K.J., Penny, W.D., Glaser, D.E., 2005. Conjunction revisited. *Neuroimage* 25, 661–667.
- Geyer, T., Shi, Z., Müller, H.J., 2010. Contextual cueing in multi-conjunction visual search is dependent on color- and configuration-based intertrial contingencies. *J. Exp. Psychol. Hum. Percept. Perform.* 36, 515–532.

- Gitelman, D.R., Parrish, T.B., Friston, K.J., Mesulam, M.M., 2002. Functional anatomy of visual search: regional segregations within the frontal eye fields and effective connectivity of the superior colliculus. *Neuroimage* 15, 970–982.
- Goodale, M.A., Milner, A.D., 1992. Separate visual pathways for perception and action. *Trends Neurosci.* 15, 20–25.
- Gottlieb, J., 2007. From thought to action: the parietal cortex as a bridge between perception, action, and cognition. *Neuron* 53, 9–16.
- Humphreys, G.W., 2001. A multi-stage account of binding in vision: neuropsychological evidence. *Vis. Cogn.* 8, 381–410.
- Humphreys, G.W., Müller, H.J., 1993. Search via recursive rejection (SERR): a connectionist model of visual search. *Cogn. Psychol.* 25, 43–110.
- Humphreys, G.W., Cinel, C., Wolfe, J., Olson, A., Klempen, N., 2000. Fractionating the binding process: neuropsychological evidence distinguishing binding of form from binding of surface features. *Vision Res.* 40, 1569–1596.
- Humphreys, G.W., Hodsoll, J., Riddoch, M.J., 2009. Fractionating the binding process: neuropsychological evidence from reversed search efficiencies. *J. Exp. Psychol. Hum. Percept. Perform.* 35, 627–647.
- Kaptein, N.A., Theeuwes, J., Van der Heijden, A.H.C., 1994. Search for a conjunctively defined target can be selectively limited to a color-defined subset of elements. *J. Exp. Psychol. Hum. Percept. Perform.* 21 (5), 1053–1069.
- Kim, C., Johnson, N.F., Cilles, S.E., Gold, B.T., 2011. Common and distinct mechanisms of cognitive flexibility in prefrontal cortex. *J. Neurosci.* 31, 4771–4779.
- Leonards, U., Sunaert, S., Hecke, P.V., Orban, G.A., 2000. Attention mechanisms in visual search – an fMRI study. *J. Cogn. Neurosci.* 12, 61–75.
- Müller-Plath, G., 2008. Localizing subprocesses of visual search by correlating local brain activation in fMRI with response time model parameters. *J. Neurosci. Methods* 171, 316–330.
- Müller-Plath, G., Pollmann, S., 2003. Determining subprocesses of visual feature search with reaction time models. *Psychol. Res.* 67, 80–105.
- Nichols, T.E., Brett, M., Andersson, J., Wager, T., Poline, J.B., 2005. Valid conjunction inference with the minimum statistic. *Neuroimage* 25, 653–660.
- Nobre, A.C., Coull, J.T., Walsh, V., Frith, C.D., 2003. Brain activations during visual search: contributions of search efficiency versus feature binding. *Neuroimage* 18, 91–103.
- Oakes, L.M., Ross-Sheehy, S., Luck, S.J., 2006. Rapid development of feature binding in visual short-term memory. *Psychol. Sci.* 17, 781–787.
- Price, C.J., Friston, K.J., 1997. Cognitive conjunction: a new approach to brain activation experiments. *Neuroimage* 5, 261–270.
- Rushworth, M.F.S., Paus, T., Sipila, P.K., 2001. Attention systems and the organization of the human parietal cortex. *J. Neurosci.* 21, 5262–5271.
- Sato, T.R., Watanabe, K., Thompson, K.G., Schall, J.D., 2003. Effect of target-distractor similarity on FEF visual selection in the absence of the target. *Exp. Brain Res.* 151, 356–363.
- Shafritz, K.M., Gore, J.C., Marois, R., 2002. The role of the parietal cortex in visual feature binding. *Proc. Natl. Acad. Sci. U. S. A.* 99 (16), 10917–10922.
- Snyder, L.H., Grieve, K.L., Brotchie, P., Andersen, R.A., 1998. Separate body- and world-referenced representations of visual space in parietal cortex. *Nature* 394, 887–891.
- Snyder, L.H., Batista, A.P., Andersen, R.A., 2000. Intention-related activity in the posterior parietal cortex: a review. *Vision Res.* 40, 1433–1441.
- Soto, D., Humphreys, G.W., Rotshtein, P., 2007. Dissociating the neural mechanisms of memory-based guidance of visual selection. *Proc. Natl. Acad. Sci. U. S. A.* 104, 17186–17191.
- Tanaka, K., 1996. Inferotemporal cortex and object vision. *Annu. Rev. Neurosci.* 19, 109–139.
- Treisman, A.M., 1998. Feature binding, attention and object perception. *Philos. Trans. R. Soc. B* 353, 1295–1306.
- Treisman, A.M., Gelade, G., 1980. Feature-integration theory of attention. *Cogn. Psychol.* 12, 97–136.
- Wei, P., Müller, H.J., Pollmann, S., Zhou, X., 2009. Neural basis of interaction between target presence and display homogeneity in visual search: an fMRI study. *Neuroimage* 45, 993–1001.
- Weissman, D.H., Mangun, G.R., Woldorff, M.G., 2002. A role for top-down attentional orienting during interference between global and local aspects of hierarchical stimuli. *Neuroimage* 17, 1266–1276.
- Wilkinson, D.T., Halligan, P.W., Henson, R.N.A., Dolan, R.J., 2002. The effects of interdistractor similarity on search processes in superior parietal cortex. *Neuroimage* 15, 611–619.
- Wojciulik, E., Kanwisher, N., 1999. The generality of parietal involvement in visual attention. *Neuron* 23, 747–764.
- Wolfe, J.M., 1994. Guided search 2.0: a revised model of visual search. *Psychon. Bull. Rev.* 1, 202–238.